

WELCOME TO
NEWCASTLE
UNIVERSITY



Introduction

Welcome to Newcastle University! In this presentation, we're aiming to provide key information about studying here at Newcastle. We will cover...



get t i n g
a r o u n d



key
f a c i l i t i e s



s t u d e n t
s e r v i c e s



c o m m u n i c a t i o n s

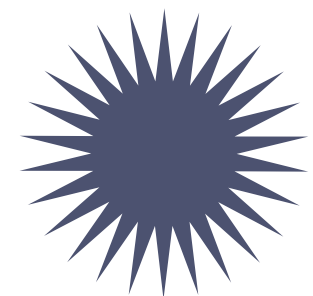


a c a d e m i c
l i f e

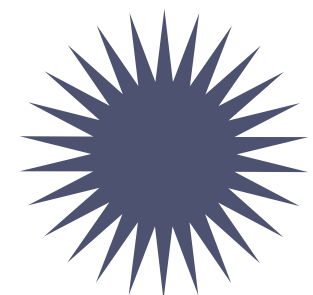


s t u d e n t
l i f e

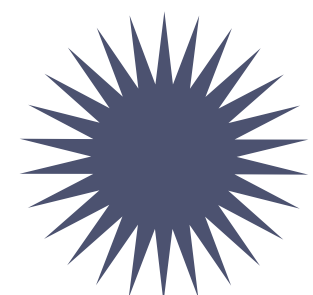
From Newcastle. For the world.



We are a community of 29,000 students from over 140 countries. There are over 5,600 international students at our Newcastle campus.



Newcastle University has campuses in the UK, Singapore and Malaysia.



Over 4000 international students will be starting their courses this September.





Our Campus

The Newcastle campus is divided between the main campus and the Newcastle Helix, which is home to the Business School and the School of Computing.

These campuses are only a 15 minute walk apart.

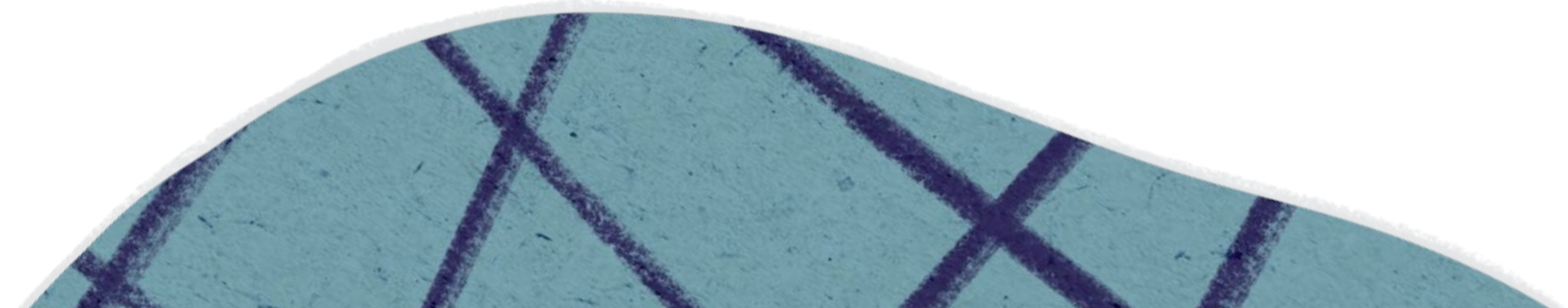


Getting Around

To navigate the campus, you can use the campus map available on your Newcastle University app.

Look out for the blue signs around campus - these signs often have maps and can point you in the right direction.

For a more detailed map with information about study spaces, water points and prayer spaces, go to this website:
https://www.ncl.ac.uk/students/campus_map/.





March 2018

	M	T	W	T	F
26	26 1	27 2	28 2	1 2	2 1
27	5 1	6 2	7 1	8 2	9 1
28	12 1	13 2	14 2	15 2	16 1
29	19	20	21	22	23
30	26	27	28	29	30

Last Updated: 04:43 13/03/2018 ?

Tuesday 13th March 2018

Lecture: Environment and Sustainability

TCP1020/L01/01

9:00am (2 hours) DAYSH.G.07



Lecture: Economics of Development

TCP1019/L01/01

12:00pm (2 hours) BEDB.2.76



Getting Around

To know where your lectures and seminars take place, you can use the timetable on the University app.

The number displayed on each date shows how many teaching sessions you have. For more information, simply click on the relevant date - this will tell you what module your lecture or seminar is for, the time, the location and how long it will last.

We have highlighted this in red on the image!

Key Facilities

There are a few key locations that all students will need to know about during their time at Newcastle University.



King's Gate



University Libraries



Sports Centre



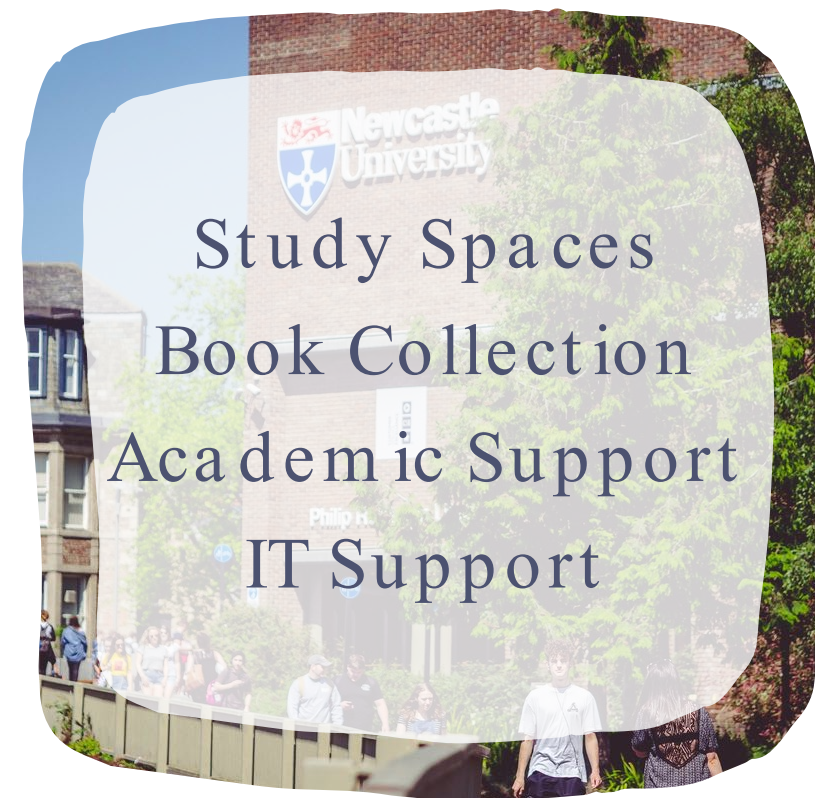
Students' Union

Key Facilities

There are a few key locations that all students will need to know about during their time at Newcastle University.



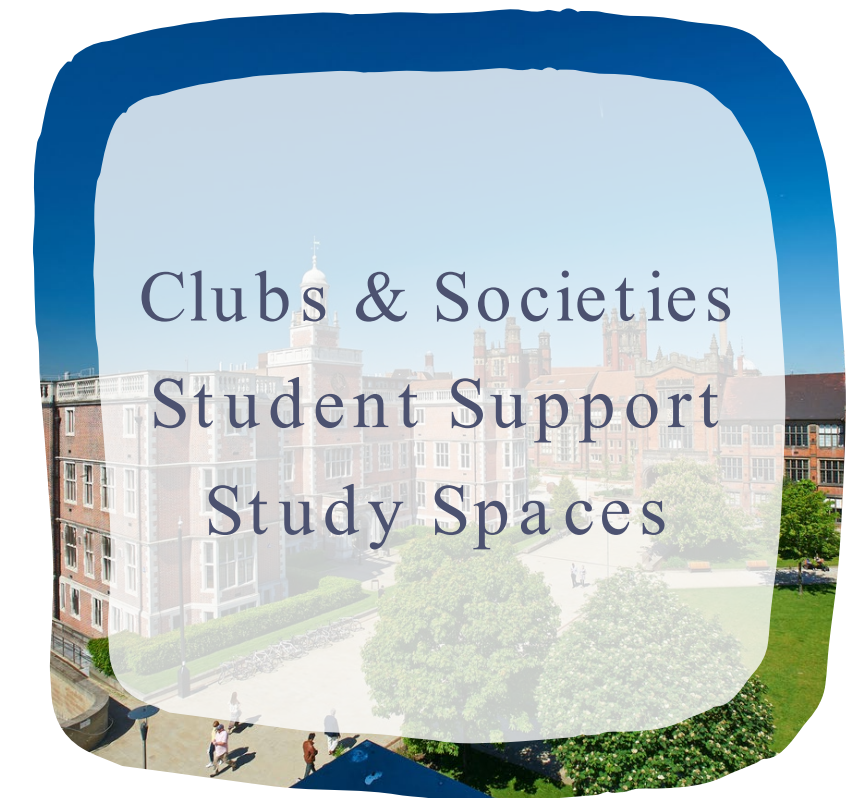
King's Gate



University Libraries



Sports Centre



Students' Union

Student services

What are student services?

Student Services can provide information and support for a range of concerns. Their services aim to be friendly, safe and accessible.

What do they do?

Student Services will work with you to discuss problems and possible solutions. They can give advice and / or signpost you to other relevant support.

HOW CAN I ACCESS THEM?

King's Gate is the key location for Student Services. You can also seek support from the Student Advice Centre in the Students' Union or online, all of which is free of charge.



FINANCE

Funding, budget planning, support for those experiencing financial difficulties, etc.

ACADEMIC

Study support, university registration, changes of study circumstances, etc.

WELLBEING

Support focused on your mental health, including counselling, tips for managing stress, etc.

CAREERS

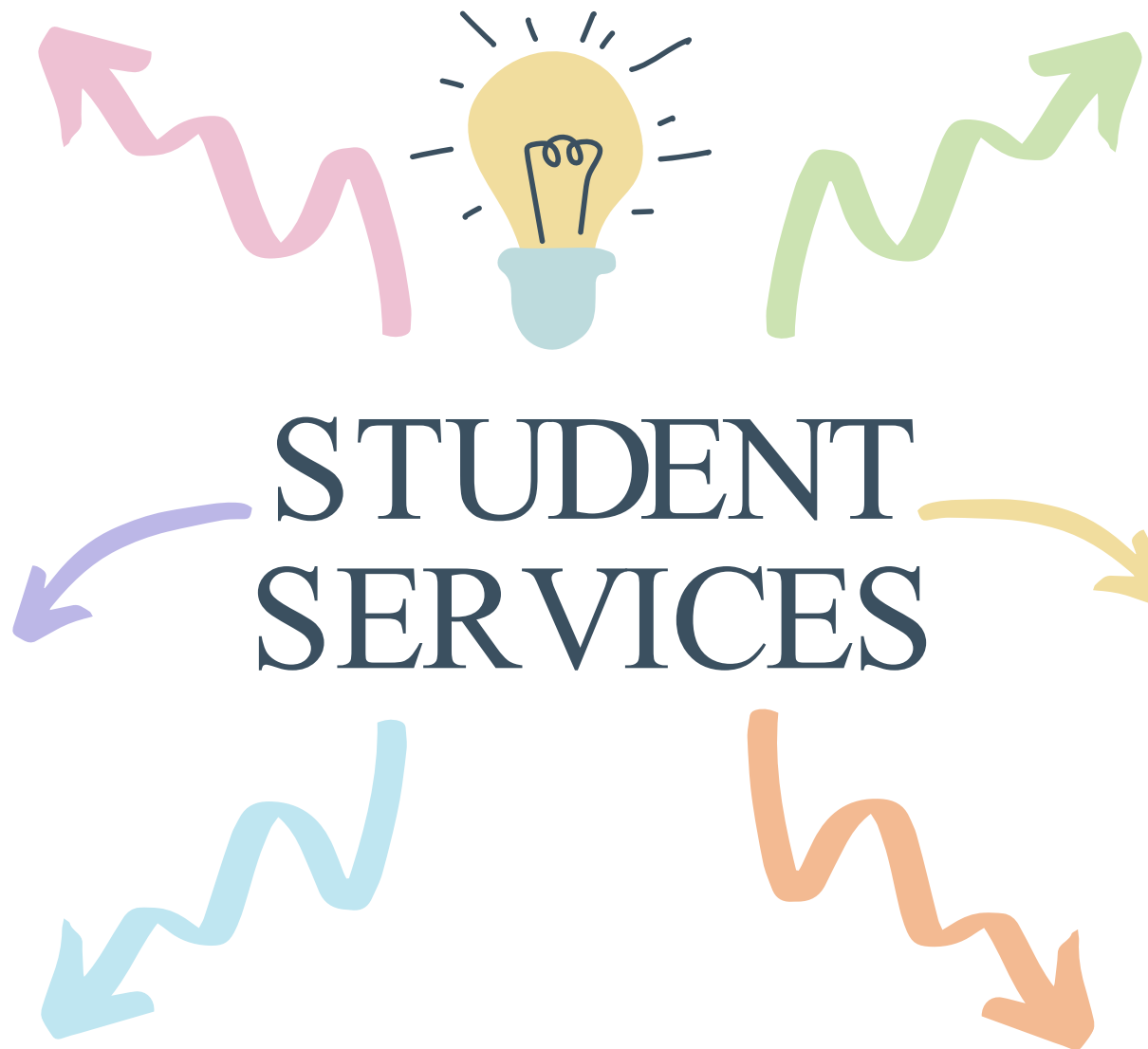
Discuss employers, advice for your next steps, improving your CV, advice on starting your own business, etc.

VISA

Guidance and renewal, immigration rules, working in the UK after graduating, etc.

AND MORE!

Language Resource Centre, computing and IT, the chaplaincy, accommodation, etc.

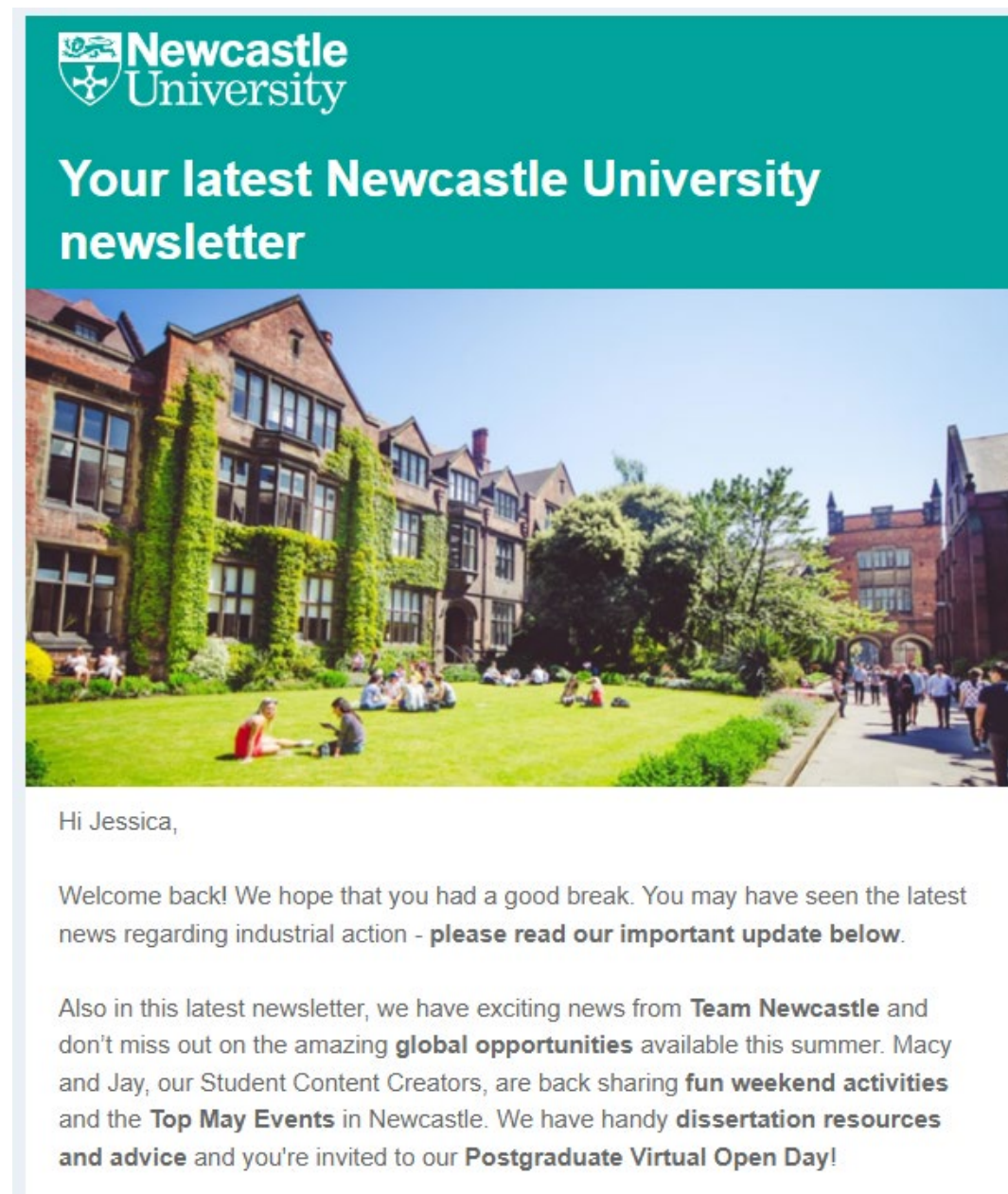


STUDENT SERVICES

You can find more information about student services here:
<https://www.ncl.ac.uk/student-services/>

Communications

Keeping up with information from the university will help you make the most of your time here - you should pay attention to the following:



the student newsletter

Student newsletters are sent to your university email address. They include important updates, signpost to key resources and highlight events taking place in Newcastle.

The newsletters are sent out on Thursdays, once every fortnight for undergraduates and postgraduate taught students. PGR students receive their own PGR newsletter on the last Thursday of every month.

Communications

Keeping up with information from the university will help you make the most of your time here - you should pay attention to the following:

The screenshot shows the Newcastle University NUConnect website. At the top left is the Newcastle University logo. To its right are navigation links: NEWS, POLICIES, UNITS AND SERVICES, and a hamburger menu icon. Further right are 'TOP TASKS' and 'Accessible menu' with another hamburger icon. The main header area contains the 'NUConnect' logo and a link to 'Our University / Student Noticeboard'. Below the header are two search bars: 'Search for articles' and 'Search for people'. The main content area features several article cards:

- Student Content Creators:** A large green card with the text 'Do you love student life at Newcastle University? Is creating great content your kind of thing? Fancy sharing your authentic experiences with students, whilst developing key skills to add your CV? Join our team of... Student Content Creators. Find out more and apply on My Career.' It includes the Newcastle University logo and a QR code. Date: August 23rd 2023.
- Apply to be a Student Content Creator!:** A smaller green card with the text 'Apply to be a Student Content Creator! Emily Crookes. We're looking for creative and ambitious students, who are confident in front of a camera, to capture and share their experiences of life at Newcastle University in content for TikTok, Instagram, blogs, newsletters and more.' Date: August 23rd 2023.
- NCL Internships available!:** A blue card with a photo of students. Source: NUConnect News. Date: August 15th 2023.
- Yearbook email: Warning:** A green card with a photo of a smartphone. Source: NUConnect News. Date: August 2nd 2023.
- Fully funded studentships available for Geospatial Systems CDT:** A blue card with the 'GEOSPATIAL SYSTEMS CENTRE FOR DOCTORAL TRAINING' logo. Source: NUConnect News. Date: July 18th 2023.
- Virtual webinar: 'Supporting your postgraduate career' - 26 July 2023:** A green card with a photo of people in a webinar. Source: NUConnect News. Date: July 18th 2023.
- Circular Chemical Economy - 5 to 7 Sept 2023:** A grey card. Source: NUConnect News. Date: July 18th 2023.
- Interested in joining the Newcastle University Symphony Orchestra?:** A grey card. Source: NUConnect News. Date: July 10th 2023.
- Summer offers from the Sport & Fitness Centre:** A grey card. Source: NUConnect News. Date: June 29th 2023.

Student noticeboard

The noticeboard is an online hub for all university updates. You can find out about the latest updates, events and opportunities from across our services and facilities.

Make sure to bookmark and check the page regularly.

Communications

Keeping up with information from the university will help you make the most of your time here - you should pay attention to the following:



Academic communications

In induction week, you should prioritise finding out the means of communication that your programme prefers. This will ensure you're kept up to date for your studies.

If possible, check with staff/module leaders if you'll receive information through your student email address, Canvas pages, Microsoft Teams or other services.

Academic Life

Even if you've studied at a college or university before coming to Newcastle University, you might find that we do things differently - here are some top things to know before Induction starts!

PERSONAL TUTOR: A member of academic staff assigned to you. They will be your first point of contact for any questions you have.

Peer mentor: For undergraduate students. A peer mentor is a student in a later stage of your degree program who will provide advice in your first year.

INDUCTION WEEK: A week of events before teaching begins in September designed to provide information about your course, university life, etc.

lecture: Large group teaching sessions that are usually not interactive. Different types of teaching sessions that are smaller scale and interactive include seminars and workshops.

Understanding Academic Culture

A collection of resources and practical advice to help you understand academic culture in the UK



Building your own understanding >

Studying at Newcastle University gives you opportunities to take control of your own academic development.



Thinking and writing critically >

Students are expected to think and write 'critically'. But what does this mean, and how can you do it?



Studying in English >

Studying in a second language brings many opportunities, but sometimes it can be challenging, too.



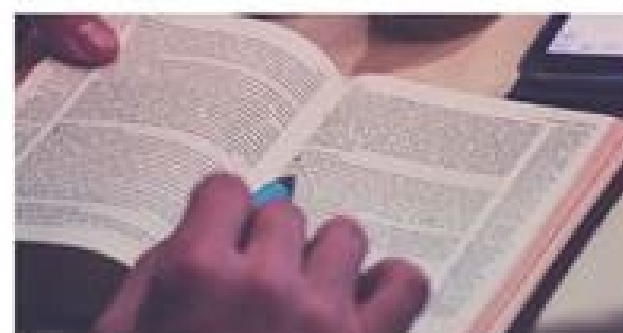
Completing assessments >

The University assesses students' learning in various ways. This mixture of assessment styles is designed to develop and test a range of your skills.



Managing your studies >

Students are expected to take responsibility for their studies. This means managing your own commitments and engagement to make sure you get what you want from your time at university.



Using other scholars' work >

Engaging with other scholars' work is one of the most important and rewarding aspects of studying at university. However, you need to make sure you always use scholarship honestly and properly.



Learning collaboratively >

Your tutors are not the only people you can learn from. You can also learn a lot from other students.



Interacting with others at university >

The University is a place where everyone has the right to be treated respectfully and equally.



Academic Skills Podcast >

Listen to a range of students share their experience of assessments, critical thinking and more.

Academic Life

For more definitions and in-depth explanations of UK university culture, go to the [Understanding Academic Culture](https://www.ncl.ac.uk/academic-skills-kit/collections/academic-culture-uk/) page of the Academic Skills Kit.

These resources cover topics such as studying in English, developing skills such as critical thinking and managing assessments.

<https://www.ncl.ac.uk/academic-skills-kit/collections/academic-culture-uk/>

Academic Life

Digital/online resources are used extensively. You should familiarise yourself with Canvas, the university's virtual learning environment. Canvas is where you can expect to find your course content, study materials, and module and programme information.



For more information about Canvas, look through the Academic Skills Kit! This page includes a useful video and other resources.

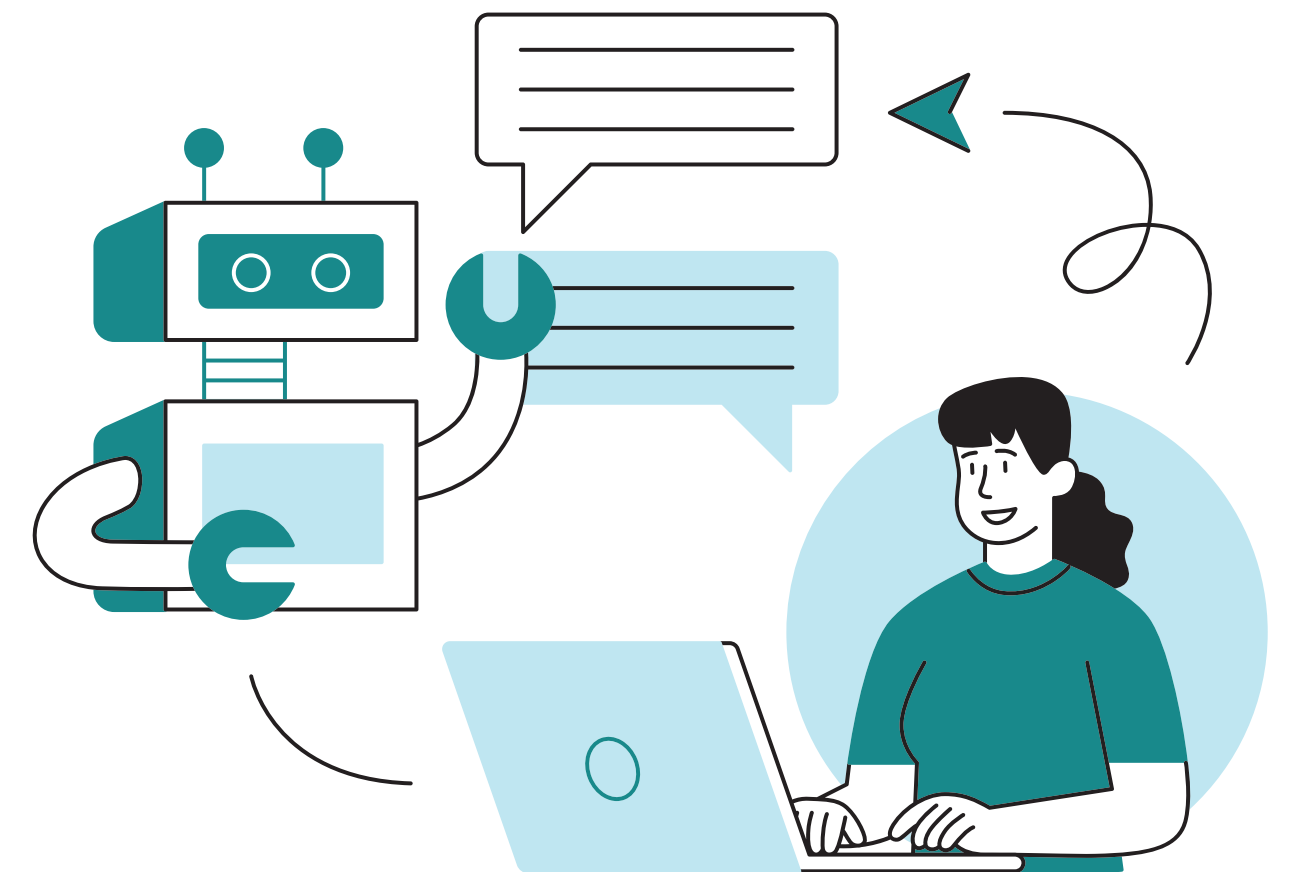
<https://www.ncl.ac.uk/academic-skills-kit/information-and-digital-skills/canvas/>

Academic Life

It's important to mention Artificial Intelligence (AI) when discussing the online aspects of your education, especially as AI technology such as ChatGPT are becoming increasingly well-known.

Before using any kind of AI, read through the university's guidance on the topic. This will teach you how to use this tool responsibly and avoid having your assessments be classed as plagiarised.

<https://www.ncl.ac.uk/academic-skills-kit/good-academic-practice/artificial-intelligence/>



study spaces

There are many places to study on campus. These include:

- The Philip Robinson Library ('the Robbo') - main campus library for all subjects except medicine and law. Open 24 hours during term time.
- The Marjorie Robinson Library Rooms ('the Marj') - large amounts of study spaces for silent and collaborative work.
- The Walton Library - located 5th floor of the Medical School. It has resources for students of Medicine, Dentistry, Psychology and Biomedical Sciences.
- The Law Library - located in Newcastle Law School and contains resources specifically for law students.

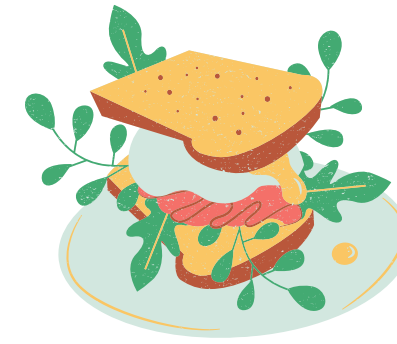


study spaces

As well as the main libraries, you can find study spaces in many of the university buildings and in the Students' Union. And, if you're tired of being on campus, there are plenty of cafes nearby too!



Food on campus



If you need somewhere to eat while on campus, Newcastle University has plenty of options!

CHICKEN SHACK
Hadrian Building

COURTYARD
Old Library
Building

DAYSH CAFE
Henry Daysh
Building

SHIJO
NUSU

DOMINO'S
NUSU

starbucks
NUSU

CQ OP
NUSU

KIMCHI PLANET
NUSU

the grand
King's Walk

BITES
Dental School

**FREDERICK
DOUGLASS CAFE**
Frederick
Douglass Building

URBAN CAFE
Urban Sciences
Building

**business
school cafe**
Business School
Atrium

**PHILIP
ROBINSON CAFE**
Philip Robinson
Library

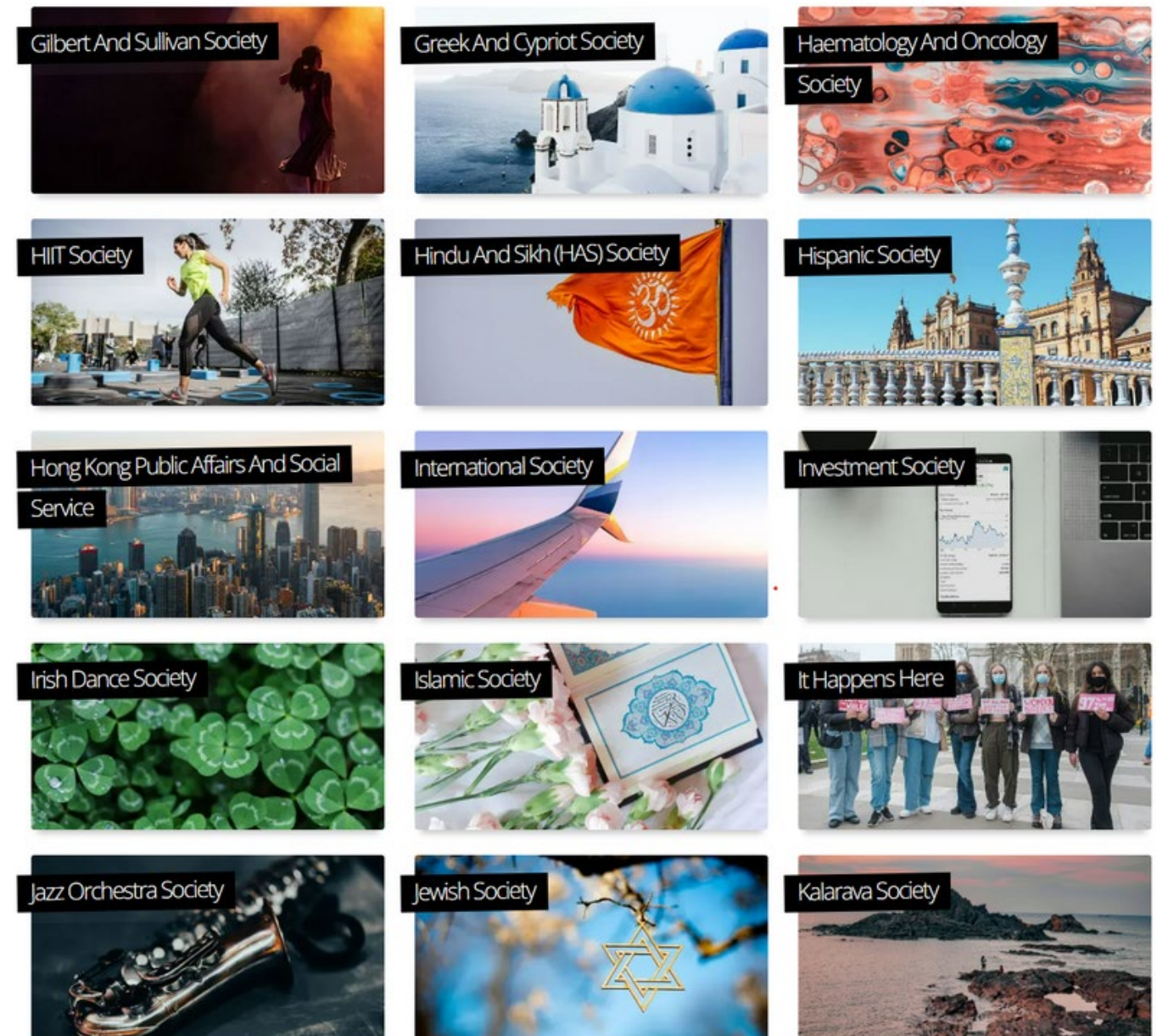
**SPORTS CENTRE
CAFE**
Sports Centre

student life

There's so much more to university life than just your lectures. Here at Newcastle, we have many opportunities for students to get involved with outside of their studies.

societies

Newcastle is home to over 160 student-led societies, meaning there really is something for everyone. There are societies related to hobbies, academic courses, cultural groups and more. You will be able to chat to these groups at the Clubs and Societies fair in Freshers' Week!

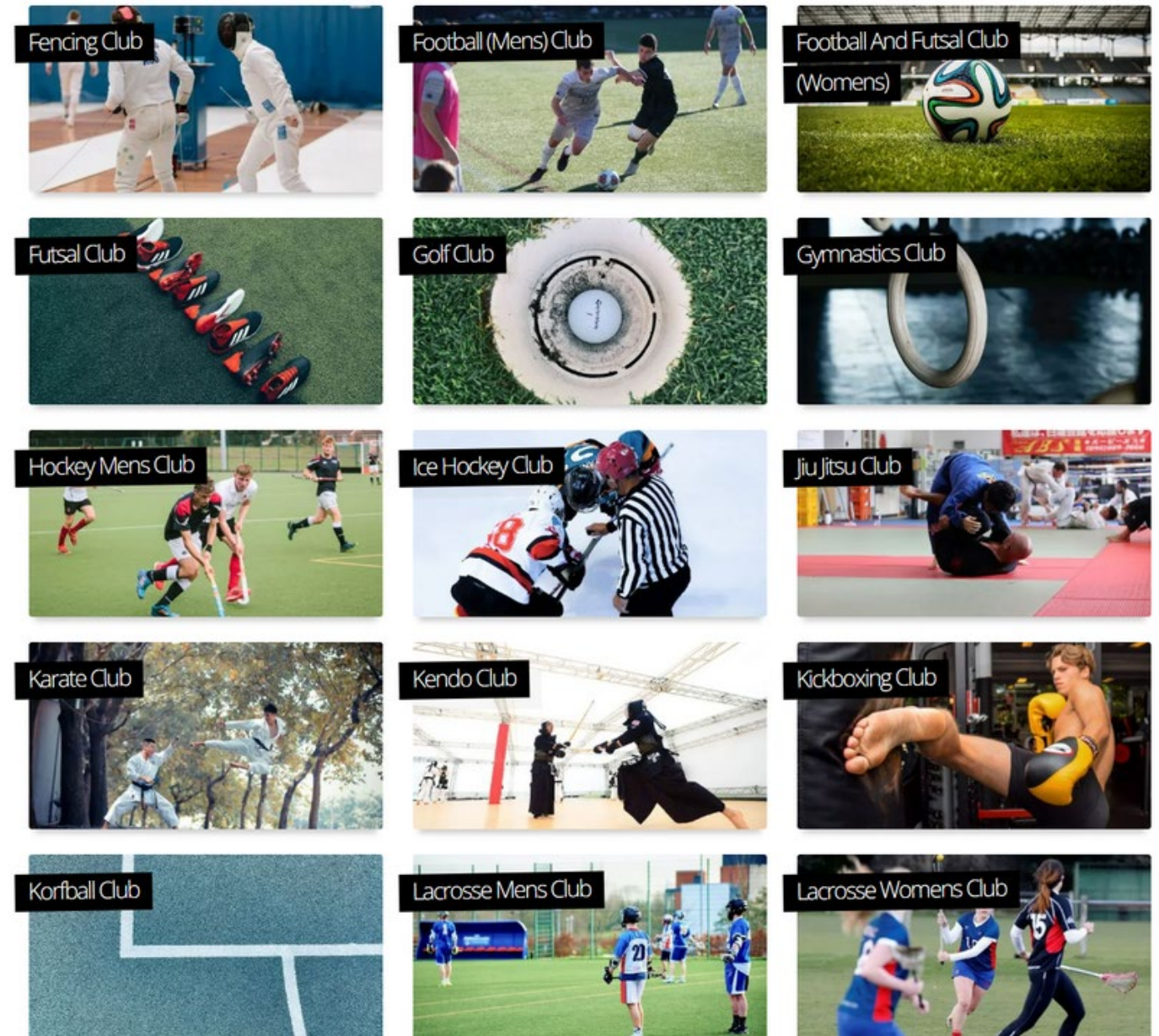


student life

There's so much more to university life than just your lectures. Here at Newcastle, we have many opportunities for students to get involved with outside of their studies.

SPORTS CLUBS

There are over 60 different sports clubs at Newcastle University, with many offering the chance to compete up to BUCS (British Universities and Colleges Sport), national and international levels! If you want to get involved more casually, look out for intermural teams or join a gym class at the Sports Centre.



student life

There's so much more to university life than just your lectures. Here at Newcastle, we have many opportunities for students to get involved with outside of their studies.

GO VOLUNTEER

'Go Volunteer' oversees many different volunteering projects, both within the university and in the wider community. You can join a one-off event to help out or sign up to volunteer frequently at long-term projects such as N.E.S.T!

Volunteering is a great way to help others, meet new people and gain new skills.



student life

There's so much more to university life than just your lectures. Here at Newcastle, we have many opportunities for students to get involved with outside of their studies.

GIVE IT A GO

Give It A Go is NUSU's activities programme for all students and staff. It encourages you to try something new with activities including day trips, arts and crafts, sports, game nights and so much more. You can meet some of the friendly GIAG team at the International Welcome social event!



student life

Getting involved in student life isn't just a great way to meet new people and gain new skills - you can participate in schemes like the NCL+ Award or even be nominated for a 'Celebrating Success' or 'Pride of Newcastle' award at the end of the year.





Any questions?

